



**HAARSLEV™**

Processing Technology

# PRE-BREAKER

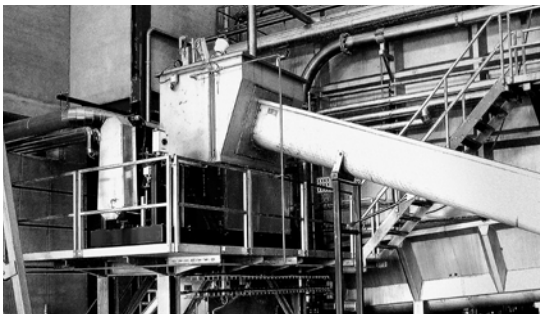
Product brochure



# HAARSLEV™

Processing Technology

## PRE-BREAKER



“

FOR BREAKING DOWN WHOLE CARCASSES, OFFAL AND BONES FROM MEAT AND POULTRY SLAUGHTERHOUSES INTO SMALLER SIZES.

The Haarslev Pre-breaker is particularly rugged and hardwearing, designed for breaking down complete carcasses as well as all types of offal and bones from meat and poultry slaughterhouses, so they can be used more effectively in rendering processes, and in accordance with relevant legislation.



### APPLICABLE FOR:

- First stage after material bins
- Installed upstream from crushers, fine crushers, etc.
- In any kind of rendering processes

Pre-breakers are used for the initial breaking down of input material to particles over 30 mm in size. They are ideal as a first stage prior to crushers, enabling you to align these initial steps with overall efficiency requirements for your process, based on particle size.

The low-speed breaker shaft makes sure the unit can deal with any foreign objects (such as metal) in the input material. Single-shaft and twin-shaft configurations are available. You can select motor size and breaker shaft speed based on the amount of material you need to break down, and the output capacity you require. This helps keep operating costs down.

### BENEFITS

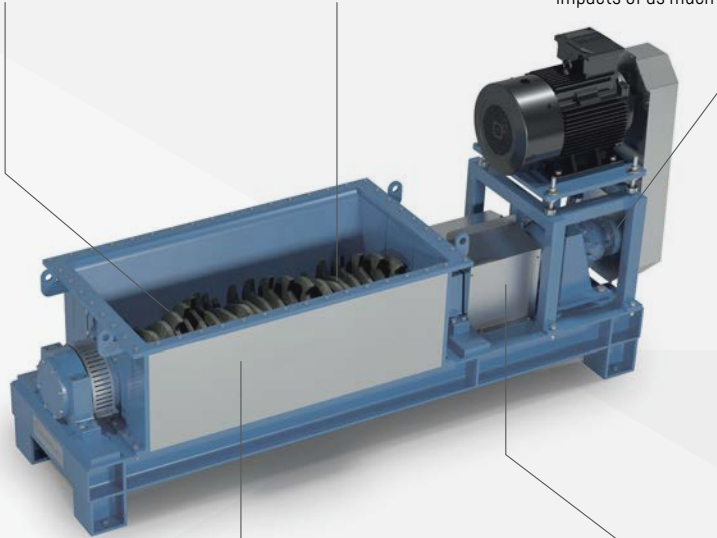
- Smaller, consistently sized particles help ensure easier and more efficient heating/cooking downstream in your processes
- Rugged and reliable to make sure your breaking operations continue with a minimum of interruption
- Stands up well to any trapped metal or foreign objects that might be in the input material
- Easy replacement of the knife shaft unit, with minimal disturbance to your processing operations
- Easy maintenance plus quick and easy parts replacement help you maximize uptime and productivity

**WHOLE CARCASSES,  
OFFAL AND BONES ENTERING  
YOUR PLANT**

Material is ground against stationary anvil

Slow-rotating breaker shaft fitted with hard-faced knives

Shaft fitted into heavy-duty spherical rollers that can withstand radial and axial impacts of as much as 80 tons



Drop-in sectional body makes it easy to replace parts quickly

Electronic rotation sensor automatically shuts off the motor if large foreign objects are encountered

**MORE EFFECTIVE COOKING PROCESSES BECAUSE  
THE PARTICLES OF MATERIAL ARE SMALLER  
AND MORE CONSISTENT**

TYPE	CAPACITY (t/h)/(lb/h)		ANVIL GAP (mm)	DIMENSIONS* (mm)/(ft-inch)						POWER (kW)/(hp)		TORQUE (kNm)/(ft-lb)		WEIGHT (kg)/(lb)	
				Length (L)		Width (W)		Height (H)							
PB 15	10 - 30	22,046 - 66,138	48	3,215	12' 2"	1,290	4' 3"	1,730	6' 1"	22 - 55	30-75	20	14,751	7,000	15,432
PB 15 HD	14 - 30	30,864 - 66,138	48	3,215	12' 2"	1,290	4' 3"	1,730	6' 1"	45 - 75	60-100	25	18,439	7,500	16,534
PB 15 FZ	14 - 30	30,864 - 66,138	48	3,215	12' 2"	1,290	4' 3"	1,730	6' 1"	45 - 75	60-100	25	18,439	7,500	16,534
PB 15 TWIN	20 - 50	66,138 - 132,277	80	3,850	13' 9"	1,800	5' 11"	1,800	5' 11"	2x45 - 2x75	2 x 60 + 2 x 100	25	18,439	11,500	25,353
PB 22/44	15 - 50	33,069 - 110,231	46	4,185	13' 9"	1,300	4' 6"	1,800	5' 11"	30-75	40-100	17	12,538	9,000	19,841
PB 22/44 HD	15 - 35	33,069 - 77,161	46	4,185	13' 9"	1,300	4' 6"	1,800	5' 11"	45 - 75	60-100	25	18,439	9,000	19,841

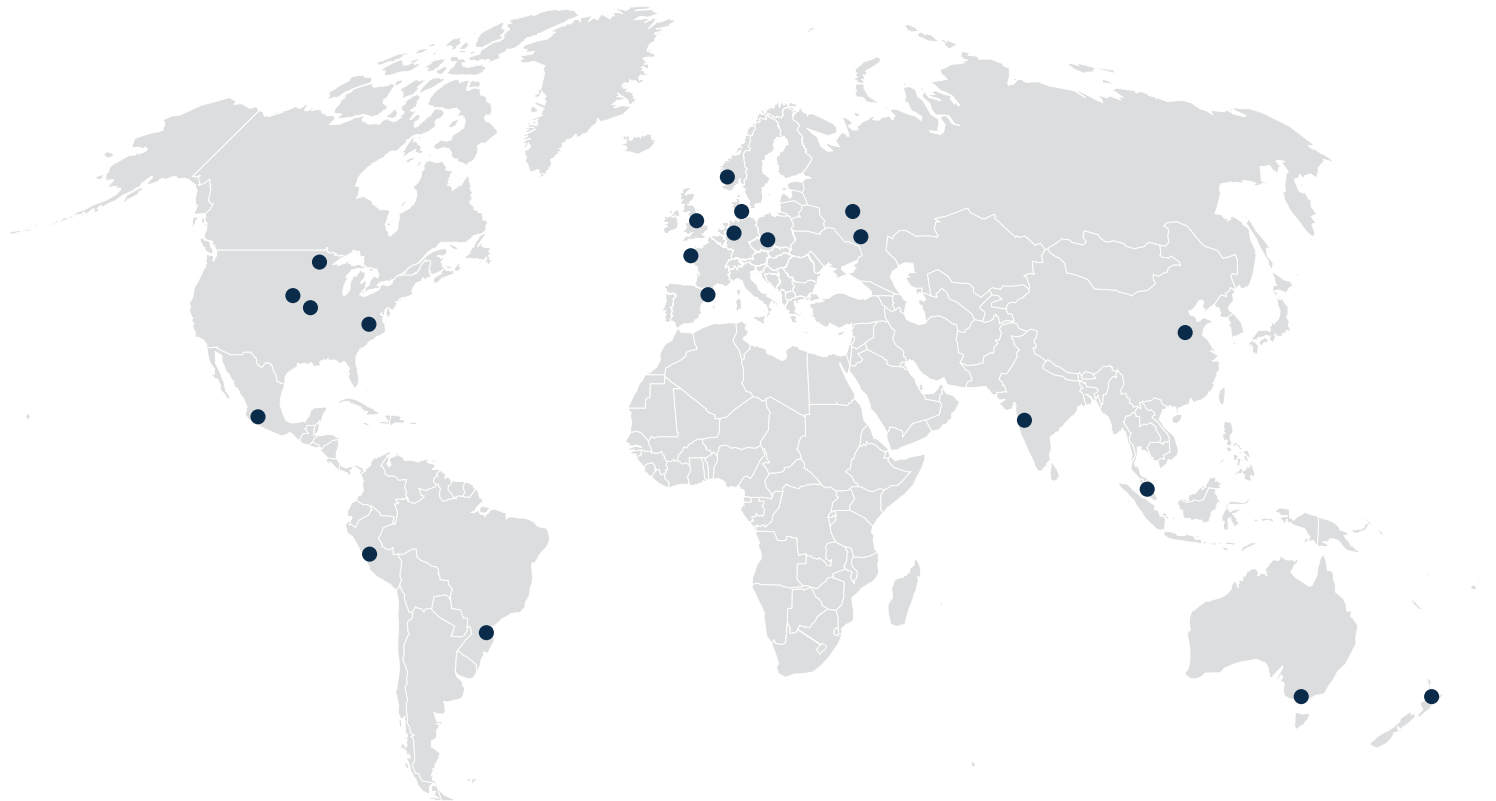
\* All statements of dimensions are approximate.

We reserve the right to alter the specifications at any time without prior notice.



# HAARSLEV™

Processing Technology



## PROCESS IS POTENTIAL

### HEAD OFFICE

Haarslev Industries A/S · Bogensevej 85  
DK-5471 Søndersø · Denmark  
Telephone: +45 63 83 11 00  
Email: [info@haarslev.com](mailto:info@haarslev.com)  
[www.haarslev.com](http://www.haarslev.com)

### GLOBAL EXPERIENCE - LOCAL PRESENCE

Please contact us or visit our website  
to locate the closest sales office.