



HAARSLEV™

Processing Technology

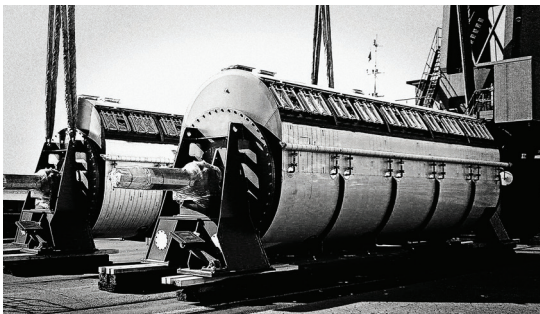
TST **DISC DRYER**

Data sheet



HAARSLEV™
Processing Technology

TST DISC DRYER



The Haarslev TST Disc Dryer is indirectly steam-heated and designed for high capacity, gentle drying and consistent product quality.



DESIGN FEATURES

The rotor consists of a central pipe on which a large number of vertically arranged and conical discs with double walls have been welded. This design results in a concentrated heating surface offering maximum evaporation capacity in a compact design.

- The TST disc dryer is designed to operate with 6–10 barG steam pressure or alternatively with thermal oil.
- The dryer stator is manufactured in stainless steel. Rotors can be offered in mild steel or stainless steel design, depending on the characteristics of the product to be dried.
- The cone-shaped profile of the TST disc is especially designed for the processing of sticky and lumpy material.

APPLICATIONS

The Haarslev TST Disc Dryers are designed for drying of sludge from municipal and industrial plants, as well as drying of residues from the pharmaceutical and chemical industries.

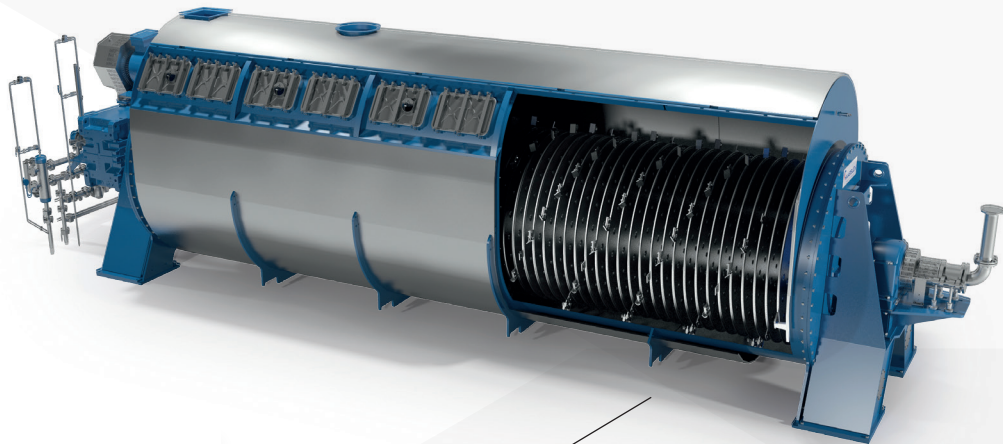
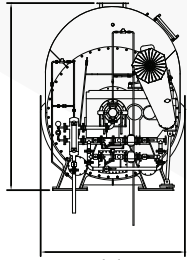
QUALITY

All TST disc dryers are carefully inspected by authorities. Furthermore, a pressure test is carried out before each shipment. The dryers are designed according to PED, ASME, GOST or marine standards (DNV, Lloyd's, Bureau Veritas etc.).

CONFIGURATION

The dewatered sludge is fed to one end of the dryer. The moisture is evaporated when the material is conveyed through the dryer towards the discharge end.

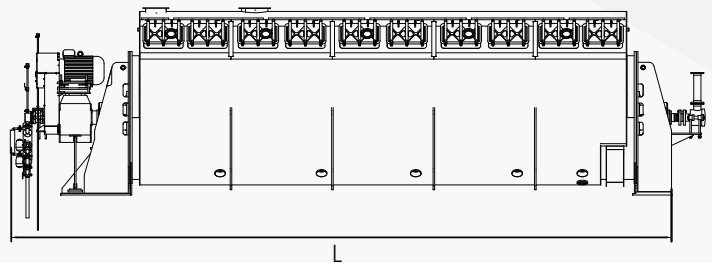
The dryer can be configured for various products. In order to further agitate and prevent the material from lumping, different scraper arm designs can be installed between the individual discs.



OPTIONS

Available options include:

- Steam jacket
- Heating with thermal oil
- Heating pump
- Discharge screw
- Load-cell system
- Inspection platform



TECHNICAL SPECIFICATIONS

TYPE	HEATING SURFACE (m ²)	POWER (kW)	SHIPPING DATA			
			Length (mm)	Width (mm)	Height (mm)	Weight* (tons)
1228	60	45	7740	2050	2600	23
1242	90	55	9700	2050	2600	30
1537	110	55	9050	2200	3200	34
1542	130	55	9750	2200	3200	38
1551	150	75	11000	2200	3200	41
1840	175	90	9700	2560	3475	50
1850	215	110	11100	2560	3475	58
2050	260	132	11290	2800	3650	69
2064	320	160	13250	2800	3650	82
2264	375	200	14000	3000	3850	98

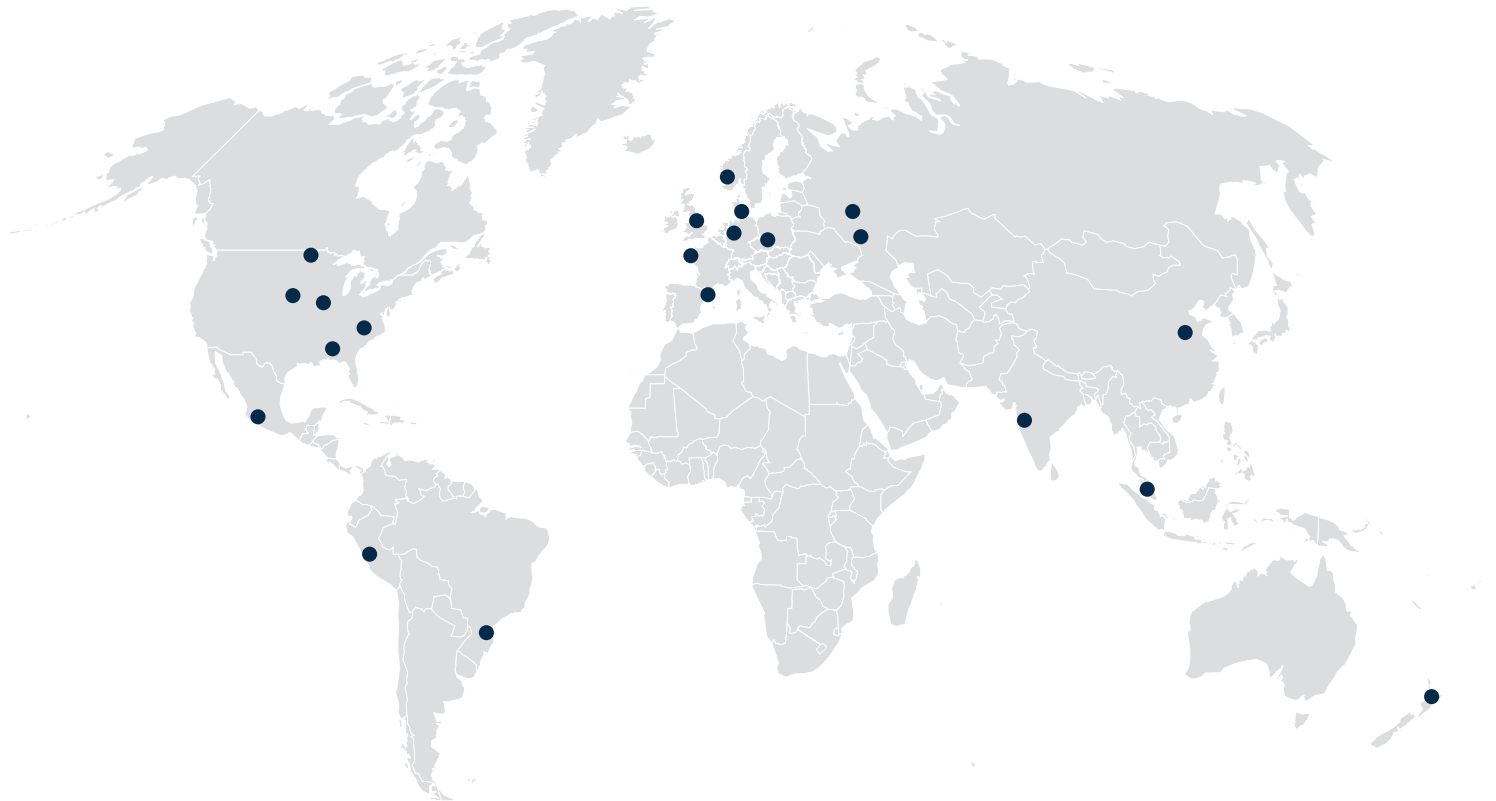
*Depending on disc thickness, the weight stated in the table is based on 10 mm. disc plates. Dimensions may vary according to application, material specification, etc.

We reserve the right to alter the specifications at any time without prior notice.



HAARSLEV™

Processing Technology



MASTER YOUR PROCESS

HEAD OFFICE

Haarslev A/S · Bogensevej 85
DK-5471 Søndersø · Denmark
Telephone: +45 63 83 11 00
Email: info@haarslev.com
www.haarslev.com

LOCAL EXPERIENCE - GLOBAL PRESENCE

Please contact us or visit our website
to locate the closest sales office.