



**HAARSLEV™**

Processing Technology

# **SCREW COOKER**

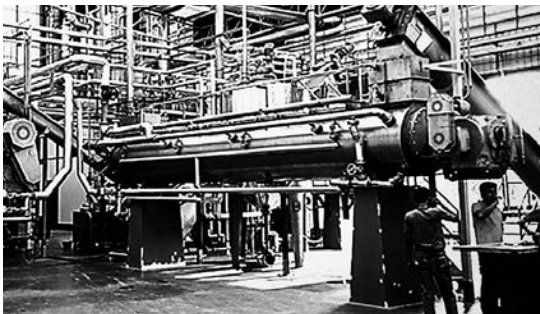
Product brochure



# HAARSLEV™

Processing Technology

# SCREW COOKER



Rugged, energy-efficient Haarslev screw cookers are ideal for processing setups where inputs vary in both quality and composition, with a bare minimum of pre-cooking preparation. You can choose throughputs from 2 to 50 metric tons per hour, and the modulating valve for the steam supply makes it easy to process even small volumes if and when needed.

“

STRAIGHTFORWARD, LARGE-CAPACITY STEAM-HEATED UNIT AS PART OF PRODUCING HIGH-VALUE MEAL BY COOKING A WIDE RANGE OF INPUTS WITH FLUCTUATING QUALITY.

These are straightforward, heavy-duty units in which the steam-heated screw rotor and flights mounted on it distribute heat evenly while the rotor gently moves the material through the cooker. This only involves a minimum of mechanical agitation, which provides better quality outputs, using as little energy as possible.



#### APPLICABLE FOR:

- Sea or land-based fish meal plants
- Poultry rendering plants

#### BENEFITS

- Energy-efficient, with maximum throughput per dollar
- Easy cleaning using standard high-pressure equipment
- Easy inspection of the cooked material at outlet end
- Good basis for more effective solids/liquid separation in downstream presses and decanter centrifuges

**CONTINUOUS FEED OF FRESH FISH  
OR POULTRY RAW  
MATERIAL OF VIRTUALLY ANY  
KIND, ENTERING COLD**

Steam-heated screw rotor moves material through the cooker

Modulating valve for adjusting steam pressure

Hinged hatches for easy inspection and cleaning

Condensate from the jacket discharges through a manifold, with steam traps

Housing with steam-heated jacket, insulation and stainless steel cover

Screw rotor fitted with flights on its entire length

**COOKED MATERIAL EXITS  
HOT, READY FOR MECHANICAL  
SEPARATION INTO SOLIDS AND  
LIQUIDS**

TYPE	CAPACITY (t/h)	DIMENSIONS (mm)*			WEIGHT (t)
		Length (L)	Height (H)	Width (W)	
SFC 0605	3.5 - 4.5	6,600	1,000	1,200	4
SFC 0806	7.0 - 8.5	8,250	1,900	1,900	10
SFC 0808	9.5 - 12.0	10,210	1,900	1,900	14
SFC 1108	15.0 - 19.0	10,750	2,300	2,400	18
SFC 1110	20.0 - 25.0	12,580	2,300	2,400	23
SFC 1112	24.0 - 30.0	14,800	2,300	2,400	27
SFC 1310	23.0 - 29.0	13,020	2,450	2,350	32
SFC 1312	28.0 - 35.0	15,020	2,450	2,350	35
SFC 1314	33.0 - 41.0	17,020	2,450	2,350	40
SFC 1612	38.0 - 48.0	15,100	2,900	2,750	41
SFC 1614	45.0 - 56.0	17,100	2,900	2,750	48
SFC 1616	52.0 - 65.0	19,100	2,900	2,750	55

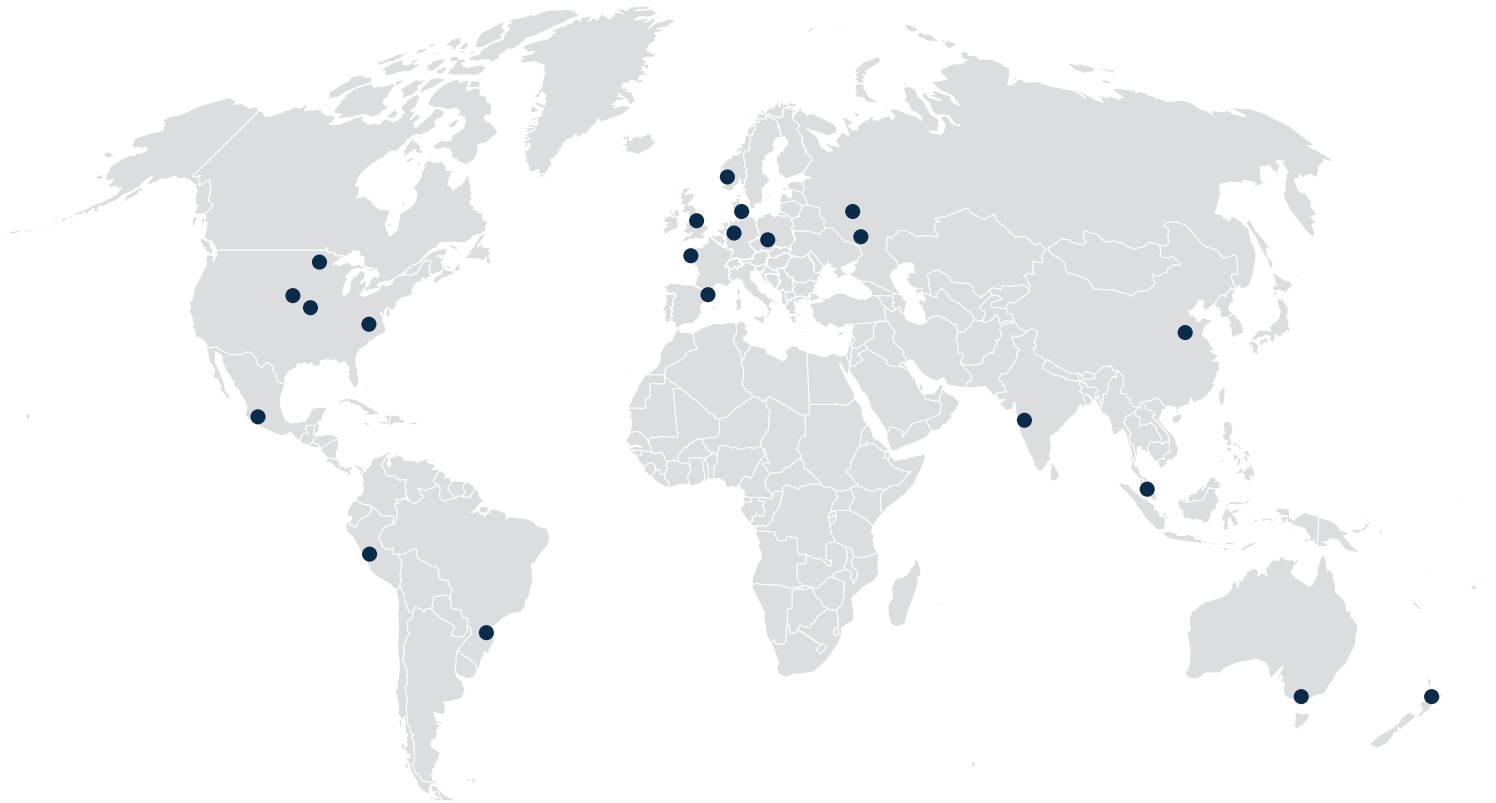
\* All statements of dimensions are approximate.

We reserve the right to alter the specifications at any time without prior notice.



# HAARSLEV™

Processing Technology



## PROCESS IS POTENTIAL

### HEAD OFFICE

Haarslev Industries A/S · Bogensevej 85  
DK-5471 Søndersø · Denmark  
Telephone: +45 63 83 11 00  
Email: [info@haarslev.com](mailto:info@haarslev.com)  
[www.haarslev.com](http://www.haarslev.com)

### GLOBAL EXPERIENCE - LOCAL PRESENCE

Please contact us or visit our website  
to locate the closest sales office.